

SUBPLATES

NFPA/ ISO STANDARDS



NFPA SIZE: D03, D05 & D08

D08 Series



D03 Series



D05 Series



NFPA Subplates

Features

- Rugged Design:** Heavy duty subplates handle pressure shocks and severe applications.
- Easy Valve Replacement:** Subplate mounted valves allow for quick valve replacement without disrupting plumbing.
- New High Flow D05:** SD05H-16FS-S Subplates with two tank line connections to the D05 pattern.

Specifications

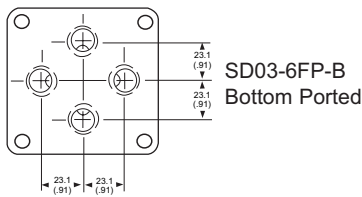
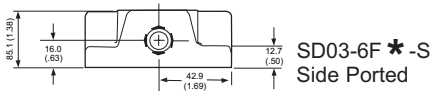
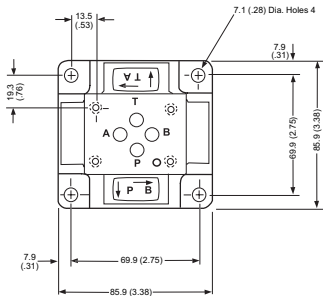
Size	D03	D05		D08
Mounting Surfaces: General Patterns		D05- Standard 	D05H- High Flow 	
Model Number				
Side Ports	SAE Ports: SD03-6FS-S NPT Ports: SD03-6FP-S	SD05-8FS-S SD05-8FP-S	SD05H-16FS-S N/A	SD08-16FS-S SD08-16FP-S
Bottom Ports	SAE Ports: SD03-6FS-B NPT Ports: SD03-6FP-B	SD05-8FS-B SD05-8FP-B	N/A N/A	N/A N/A
Mounting Surface	NFPA: T3.5.1.MR1-F1984-03 ISO: ISO 4401-03	T3.5.1.MR1-F1984-D05 ISO 4401-05	T3.5.1.MR1-D05 ISO 4401-05	T3.5.1.MR1-D08 ISO 4401-08
Nominal Flow Rates	5 gpm (19 lpm)	12 gpm (45 lpm)	25 gpm (95 lpm)	50 gpm (190 lpm)
Material	Ductile Cast Iron	Ductile Cast Iron	Nickel Plated Steel	Ductile Cast Iron
Maximum Pressure	Cast Iron 5000 psi (350 bar) Aluminum (optional) 3000 psi (210 bar)			
Recommended Fluids	Petroleum Based Fluids- ISO VG32-68, Phosphate Ester, Most Vegetable Oils, Water Based Fluids to 40% Water			



Dimensional Data

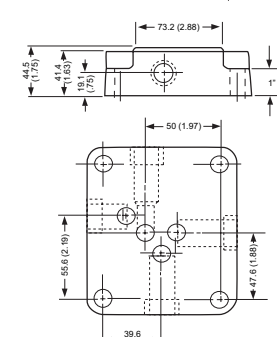
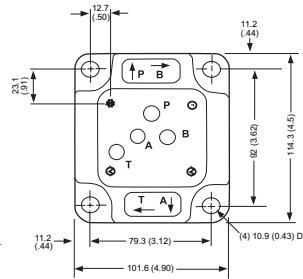
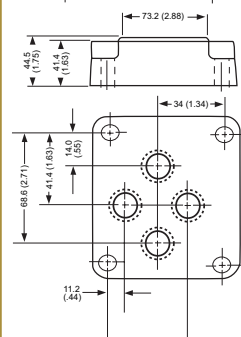
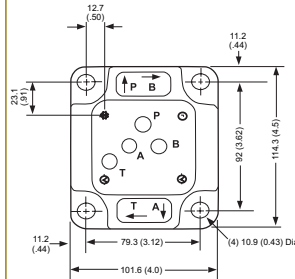
Series SD03

Units: mm/ (Inch)



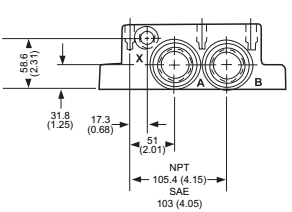
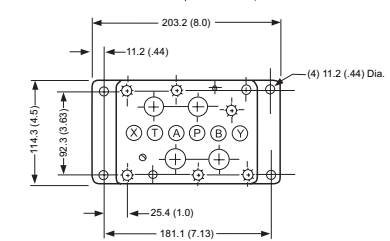
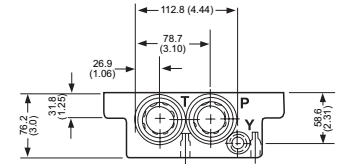
Series SD05

Units: mm/ (Inch)



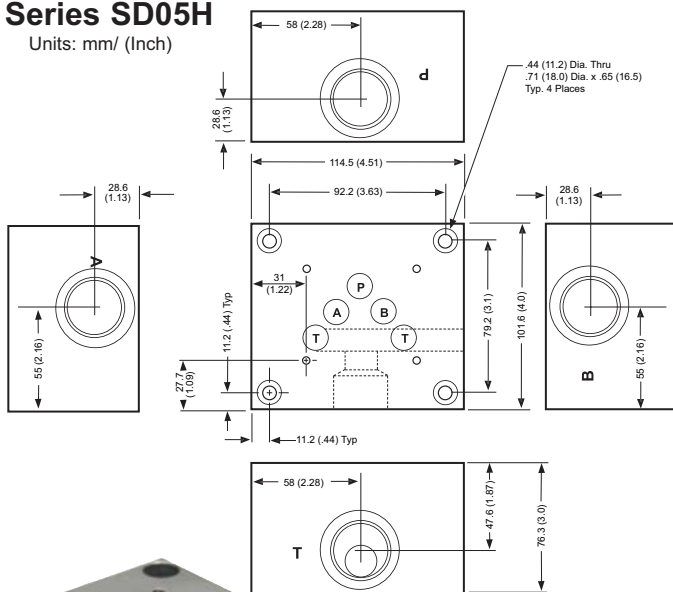
Series SD08

Units: mm/ (Inch)



Series SD05H

Units: mm/ (Inch)



SD05H-16FS-S-A Hi-Flow Subplate

Ordering Information

S D05 - 8 - FS - S

Subplate

Code	Size
6	3/8"
8	1/2"
16	1"

Code	Connection
S	Side Ports
B	Bottom Ports

Size
D03
D05
D05H
D08

Code	Connection
FP	Female Pipe
FS	Female SAE

Material:
Ductile Cast Iron
(SD05H is Nickel Plated Steel)