

BALL VALVES

D3 SERIES- STAINLESS STEEL BALL VALVES- ISO5211



D3BV-24-FP

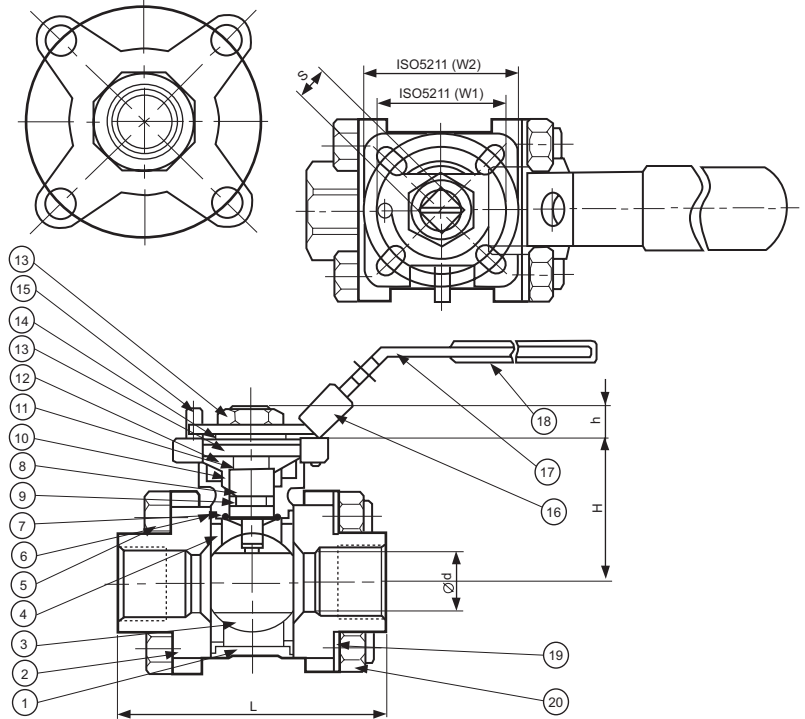
Specifications

1/2" thru 2"

1. 3 Piece, Full Ported Design
2. 1/2" thru 2" Female NPT
3. ISO5211 Direct Mounting Pad
4. 1000 psi maximum
5. Adjustable Vee Style Stem Packing
6. Oil, Water, Air and General Chemical Service
7. **Temperature Rating:** -20 to 350°F, (-25 to 175°C)

D3 Series Stainless Steel Valves- ISO5211 316SS

Dimensional Data



Materials

1. Body- ASTM A351 GR. CF8M
2. Cap- ASTM A351 GR. CF8M
3. Ball- ASTM A351 GR. CF8M
4. Seat- PTFE
5. Bolts- ASTM A93 GR. BBM
6. Gasket- PTFE
7. Thrust Washer- PTFE
8. Stem- ASTM A276 GR. 316
9. O-Ring- Viton
10. Packing- PTFE
11. Ring- 304SS
12. Belleville Washer- 410SS
13. Handle Nut- 304SS
14. Stem Washer- 304SS
15. Set Screw- 304SS
16. Locking Plate- 304SS
17. Handle- 304SS
18. Handle Sleeve- Vinyl
19. Bolt Washer- 304SS
20. Bolt Nuts- ASTM A 194 GR. 8M

SIZE	Model	∅ d	L	H	h	S	W1	W2	ISO5211	Wt kg (lb)
1/2"	D3-BV-8FP-V2	15.0(0.59)	65.5(2.58)	38 (1.50)	7 (0.28)	9 (0.35)	36 (1.42)	42 (1.65)	F03/ F04	
3/4"	D3-BV-12FP-V2	20.0(0.79)	77.6(3.06)	42.4(1.67)	9 (0.35)	9 (0.35)	36 (1.42)	42 (1.65)	F03/ F04	
1"	D3-BV-16FP-V2	25.0(0.98)	83.5(3.29)	48.5(1.91)	12 (0.47)	11 (0.43)	42 (1.65)	50 (1.97)	F04/ F05	
1-1/4"	D3-BV-20FP-V2	32.0(1.26)	102.5(4.04)	54 (2.13)	12 (0.47)	11 (0.43)	42 (1.65)	50 (1.97)	F04/ F05	
1-1/2"	D3-BV-24FP-V2	40.0(1.58)	117.6(4.63)	66 (2.60)	16 (0.63)	14 (0.55)	50 (1.97)	70 (2.75)	F05/ F07	
2"	D3-BV-32FP-V2	50.0(1.97)	130.2(5.13)	74 (2.91)	16 (0.63)	14 (0.55)	50 (1.97)	70 (2.75)	F05/ F07	

Units: mm (inches)

Ordering Information

D3BV - 32 - FP - V2

