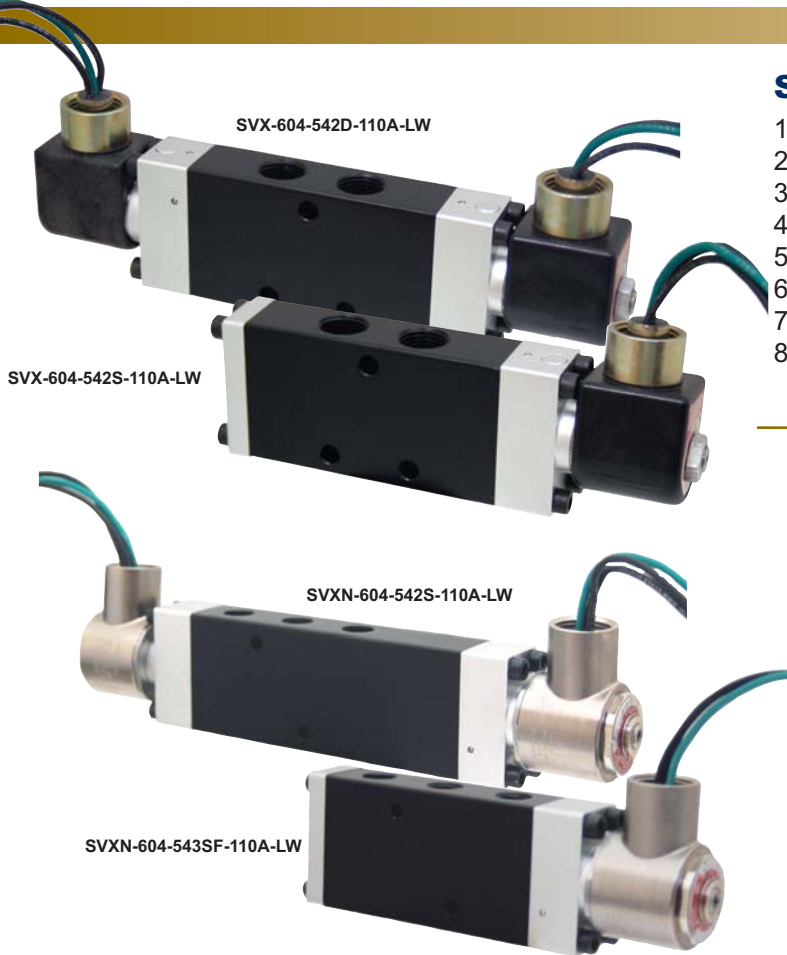


SOLENOID VALVES

600 SERIES- EXPLOSION PROOF SOLENOID VALVES



1/4" & 3/8" Ports



Specifications

1. **Media:** Air (No other gases or liquids)
2. **Operation:** Solenoid (Direct Acting)
3. **Function:** 5 port, 4 way
4. **Operation Temp. Range:** 41 - 140°F (5 - 60°C)
5. **Maximum Pressure:** 135 psi (9.3 bar)
6. **Working Pressure:** 21 - 114 psi (1.5 - 8.0 bar)
7. **Lubrication:** None Required
8. **Insulation:** Class F

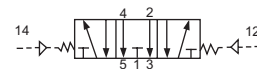
Symbols



5 port, 4 way, 2 position
(spring return,
single solenoid)



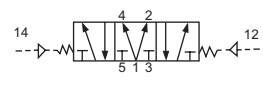
5 port, 4 way, 2 position
(detented,
double solenoid)



5 port, 4 way, 3 position



5 port, 4 way, 3 position
(spring centered blocked,
double solenoid)



5 port, 4 way, 3 position

Explosion Proof Solenoid Valves- 600 Series

Ordering Information

SVX - 606 - 542S - 24D - SRL

Code	Description
SVX	Solenoid Valve Explosion Proof
SVX N	Solenoid Valve Explosion Proof Namur

Model	Port Size
604	1/4"
606	3/8"

Code	Standard Configurations
542S	5 port, 4 way, 2 pos., spring return
542D	5 port, 4 way, 2 pos., detented (double solenoid)
543F	5 port, 4 way, 3 pos.,

Coil Voltage
omit (none)
12D (DC)
24A (AC)
24D (DC)
48A (AC)
110A (AC)
220A (AC)

Code	Electrical Connector
omit	none
SR	Strain Relief
CD	1/2" Conduit
LW	Lead Wire 36"
SRL	Strain Relief-Lighted (standard)
CDL	1/2" Conduit-Lighted
LWL	Lead Wire 36"-Lighted

Available/ Not Stocked:
543B & 543T



SOLENOID VALVES

600 SERIES- EXPLOSION PROOF SOLENOID VALVES



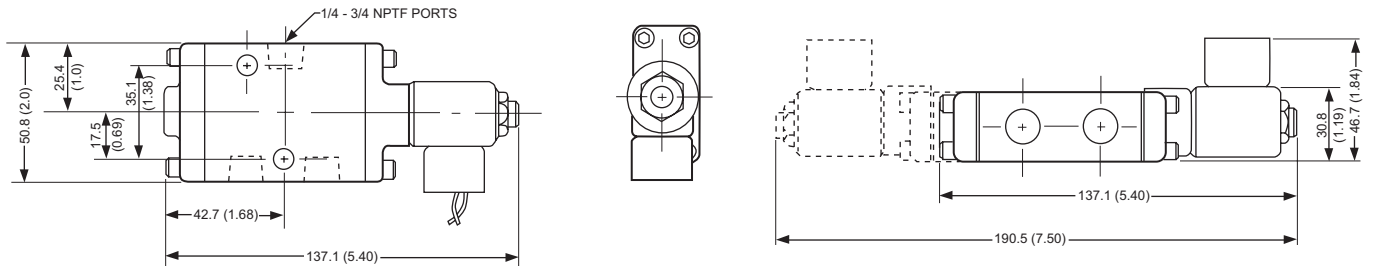
1/4" & 3/8" Ports

Dimensional Data

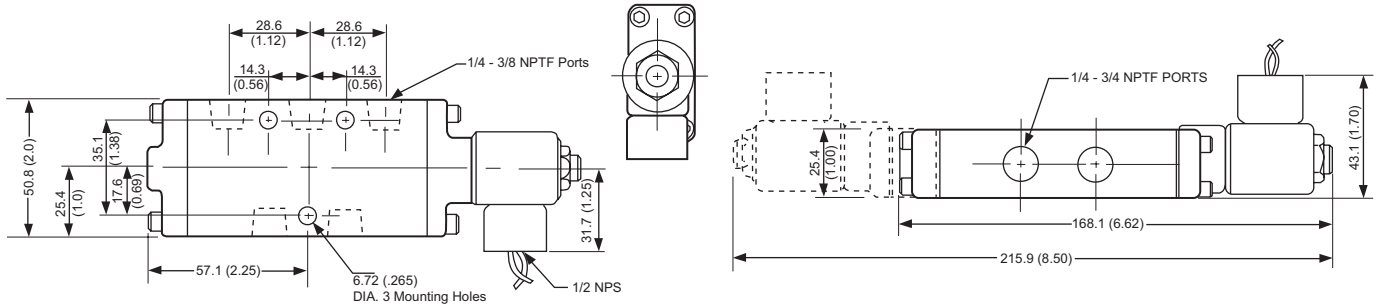
Units: mm/ (Inch)

600 SERIES EXPLOSION PROOF

SVX - 3 Way



SVX - 4 Way



SVXN - Namur

