

SOLENOID VALVES

200 THRU 800 SERIES- SOLENOID VALVES



1/8" thru 1/2" Ports

SV808-543B-110A-SRL



SV406-542D-110A-SRL

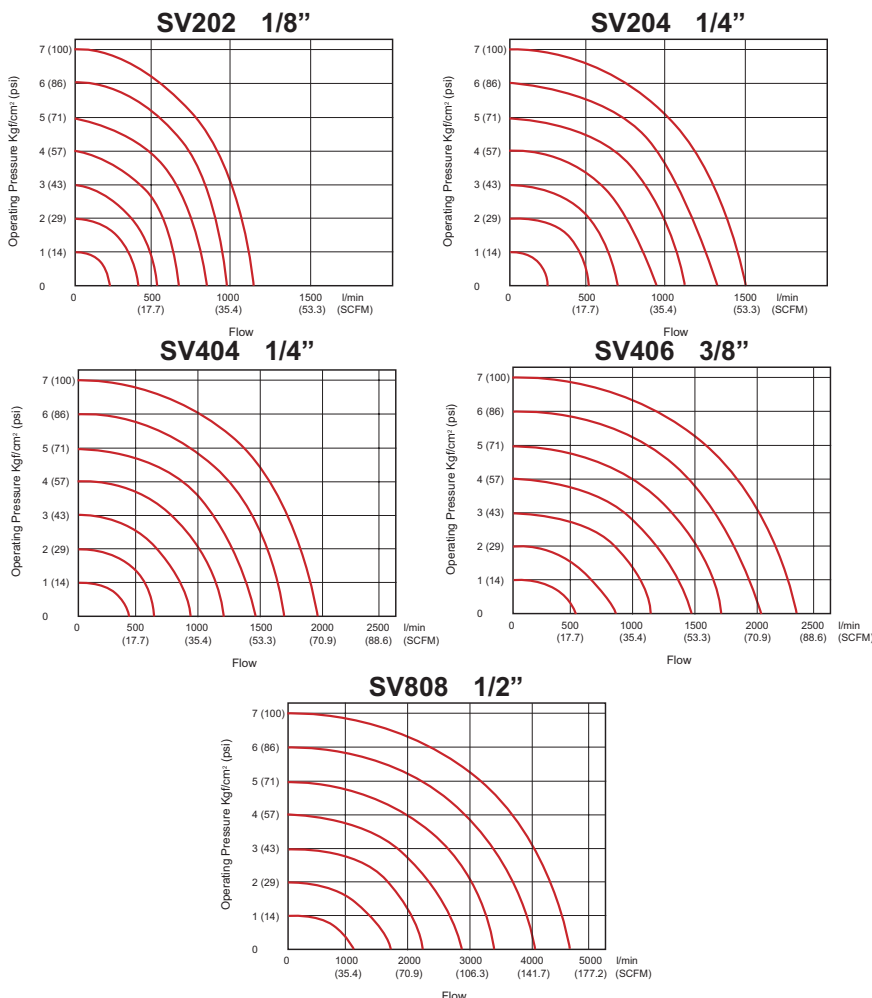
SV202-542S-110A-SRL

Solenoid Valves- 200 thru 800 Series

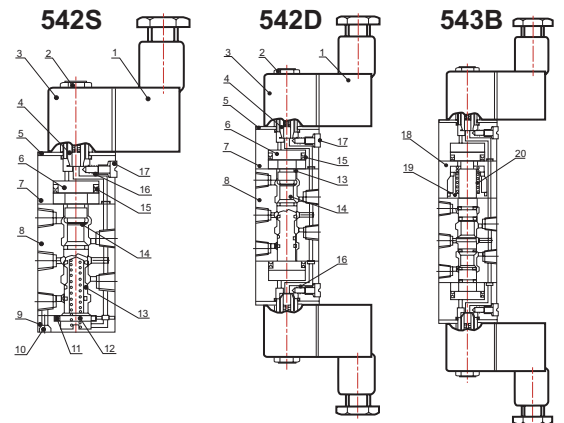
Specifications

1. **Media:** Air (No other gases or liquids)
2. **Operation:** Solenoid (Direct Acting)
3. **Function:** 5 port, 4 way
4. **Operation Temp. Range:** 41 - 140°F (5 - 60°C)
5. **Maximum Pressure:** 135 psi (9.3 bar)
6. **Working Pressure:** 21 - 114 psi (1.5 - 8.0 bar)
7. **Orifice:** 200 Series: 12 mm² - 16 mm²
400 Series: 18 mm² - 30 mm²
800 Series: 30 mm² - 50 mm²
8. **Flows:**
9. **Lubrication:** None Required
10. **Maximum Cycle Rate:** 200 Series: 5 cycles/ second
400 Series: 4 cycles/ second
800 Series: 3 cycles/ second
11. **Insulation:** Class F
12. **Power Consumption:** AC: 4.5 VA DC: 3.0 W

Flow Data



Parts Breakdown



No.	Name	No.	Name
1	Connector	11	Bottom Cover Gasket
2	Nut	12	Spool Spring
3	Coil	13	Spool O-Ring
4	Armature Assembly	14	Spool
5	Fixed Plate	15	Piston O-Ring
6	Piston	16	Override Spring
7	Pilot Kit	17	Manual Override
8	Body	18	Side Cover
9	Bottom Cover	19	Spring Holder
10	Fixed Screw	20	Return Spring



SOLENOID VALVES

200 THRU 800 SERIES- SOLENOID VALVES



1/8" thru 1/2" Ports

Construction Material

Name	Material			Name	Material		
	542S	542D	543B		542S	542D	543B
Body	Aluminum Alloy			Fixed Plate	Nickel Plated Steel		
Spool	Aluminum Alloy			Nut	Plastic		
Manual Override O-Ring	NBR			Manual Override	Plastic		
Connector Gasket	NBR			Bottom Cover	<small>200 Series: NBR 400/800 Series: Zinc Alloy</small>		
Spool O-Ring	HNBR			Manual Override Spring	Stainless Steel		
Bottom Cover Gasket	NBR			Spool Spring	Stainless Steel		
Pilot Gasket	NBR			Pilot Body	PBT+Glass Fiber		
Connector	Plastic			Fixed Screw	Iron		
Return Holder O-Ring			NBR	Coil Cover	Heat-Resistant Resin		
Return Kit			Copper	Manifold	Aluminum Alloy		
Side Cover			Aluminum Alloy	Piston	Plastic		
Return Spring			Stainless Steel	Armature	Pure Iron		
Return Spring Kit			Copper				

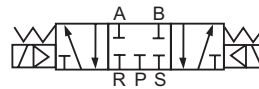
Symbols



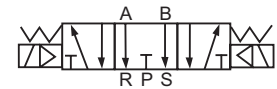
5 port, 4 way, 2 position
(spring return,
single solenoid)



5 port, 4 way, 2 position
(detented,
double solenoid)



5 port, 4 way, 3 position
(spring centered blocked,
double solenoid)



5 port, 4 way, 3 position
(exhaust centered,
double solenoid)

Ordering Information

SV - 204 - 542D - 110A - SRL

Code	Description
SV	Solenoid Valve

Model	Port Size
202	1/8"
204	1/4" (1/8" Exhaust)
404	1/4"
406	3/8" (1/8" Exhaust)
808	1/2"

Coil Voltage
omit (none)
12D (DC)
24A (AC)
24D (DC)
48A (AC)
110A (AC)
220A (AC)

Code	Electrical Connector
omit	none
SRL	Strain Relief-Lighted (standard)
SR	Strain Relief
CD	1/2" Conduit
LW	Lead Wire 36"
CDL	1/2" Conduit-Lighted
LWL	Lead Wire 36"-Lighted

Code	Standard Configurations
542S	5 port, 4 way, 2 pos., spring return
542D	5 port, 4 way, 2 pos., detented (double solenoid)
543B	5 port, 4 way, 3 pos., spring centered- all ports blocked (double solenoid)
543F	5 port, 4 way, 3 pos., exhaust center- P blocked, A & B to exhaust (double solenoid)



SOLENOID VALVES

200 THRU 800 SERIES- SOLENOID VALVES



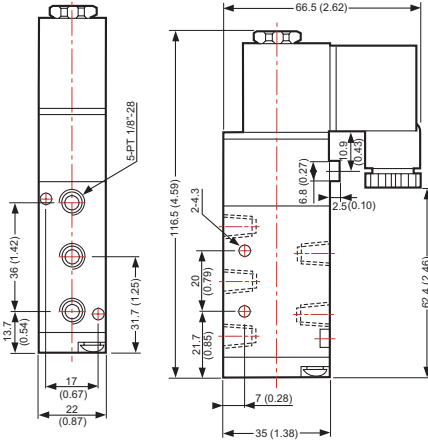
1/8" thru 1/2" Ports

Dimensional Data

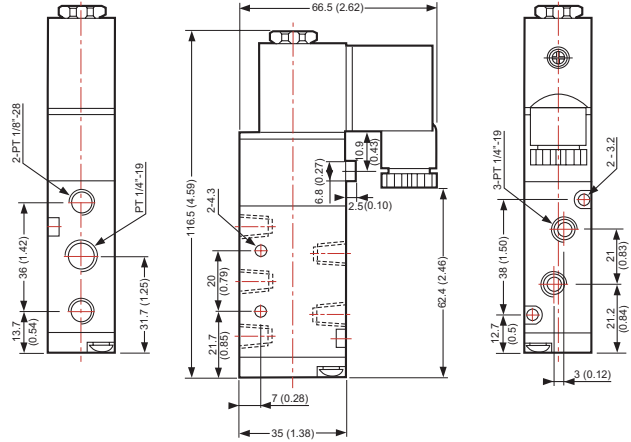
200 SERIES

Units: mm/ (Inch)

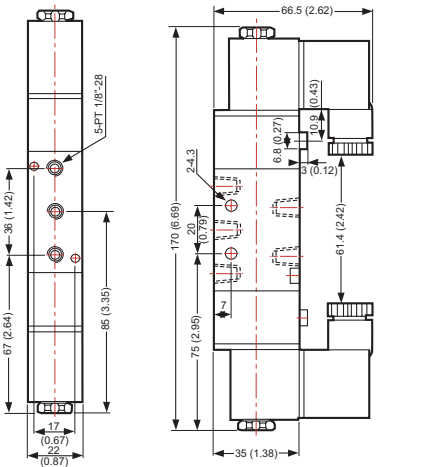
SV202-542S



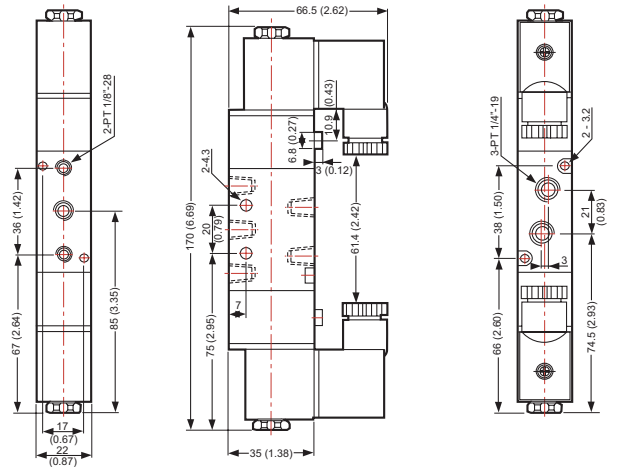
SV204-542S



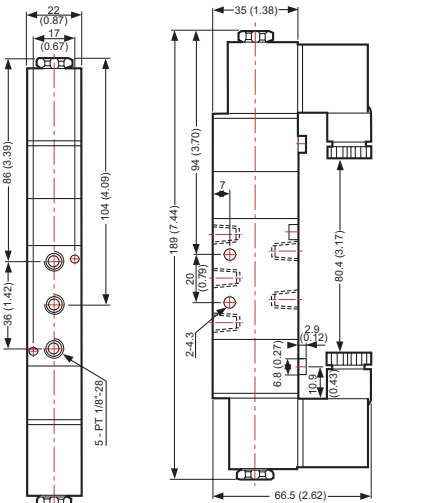
SV202-542D



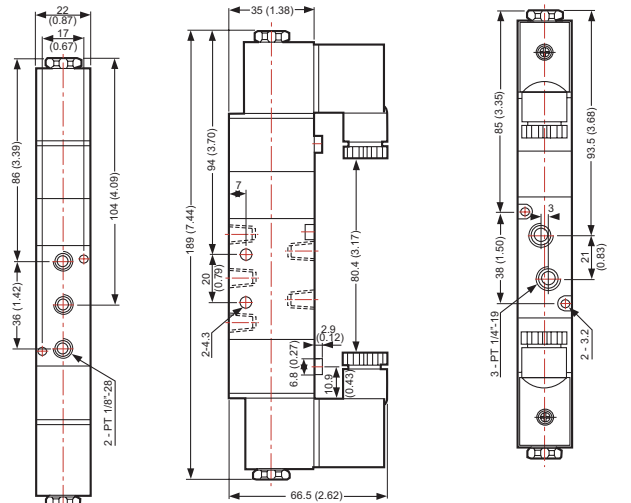
SV204-542D



SV202-543B



SV204-543B



SOLENOID VALVES

200 THRU 800 SERIES- SOLENOID VALVES



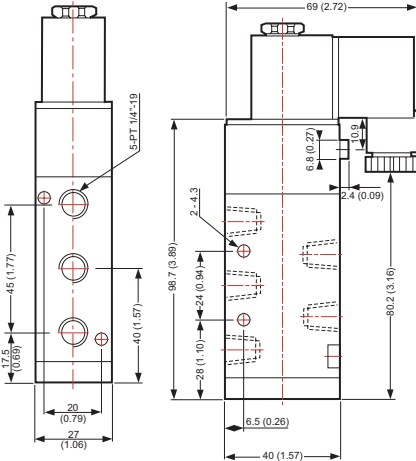
1/8" thru 1/2" Ports

Dimensional Data

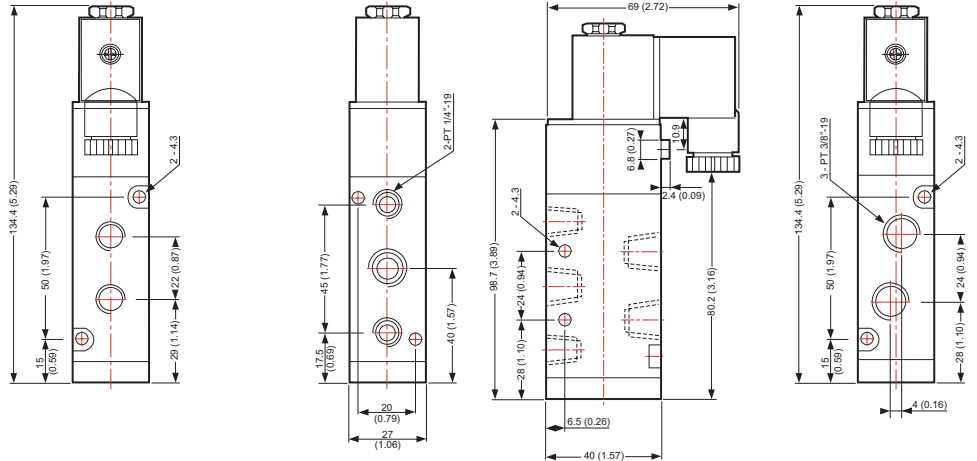
400 SERIES

Units: mm/ (Inch)

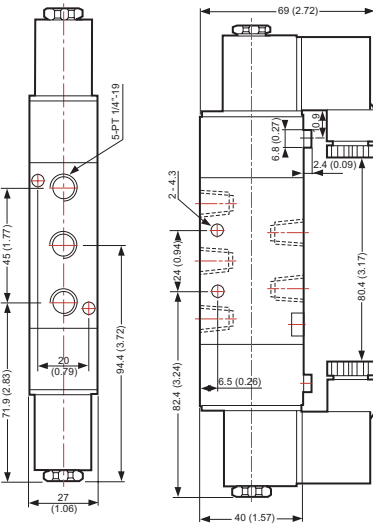
SV404-542S



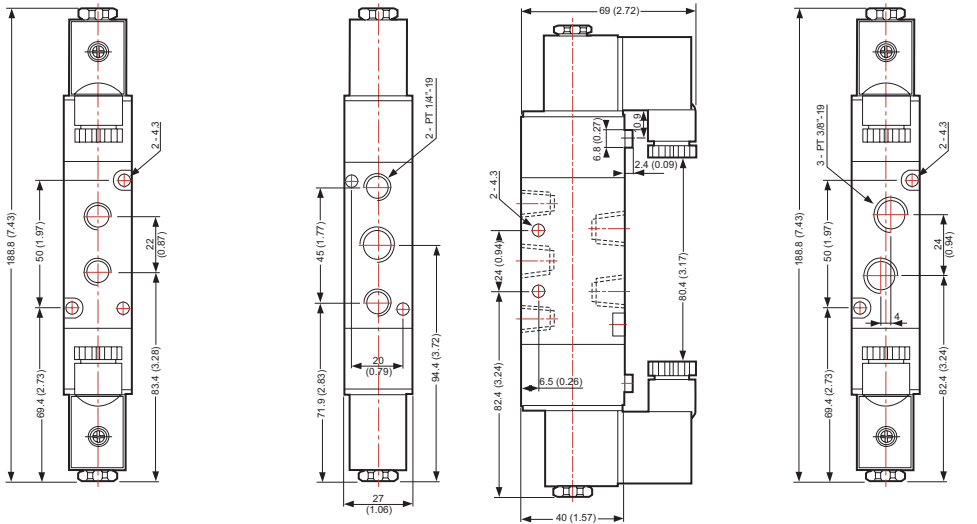
SV406-542S



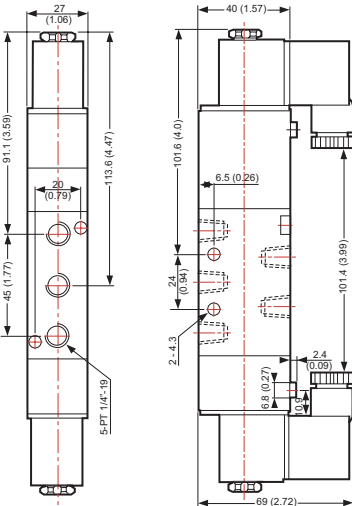
SV404-542D



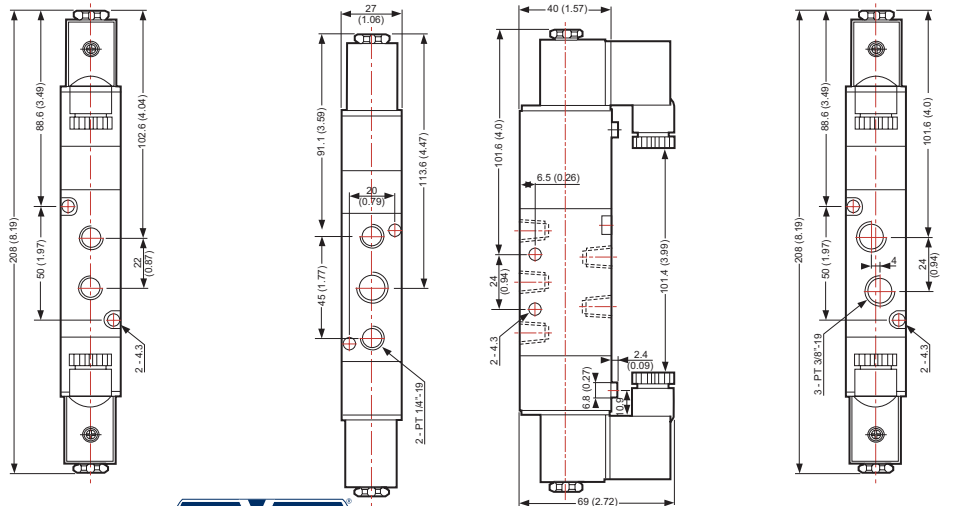
SV406-542D



SV404-543B



SV406-543B



SOLENOID VALVES

200 THRU 800 SERIES- SOLENOID VALVES



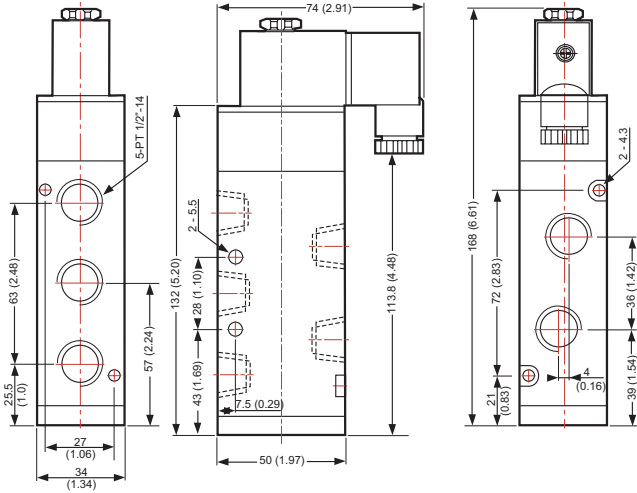
1/8" thru 1/2" Ports

Dimensional Data

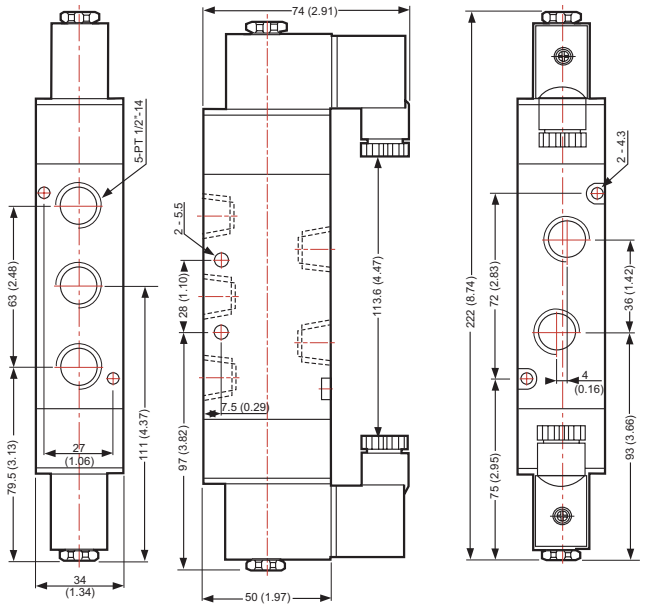
800 SERIES

Units: mm/ (Inch)

SV808-542S



SV808-542D



SV808-543B

