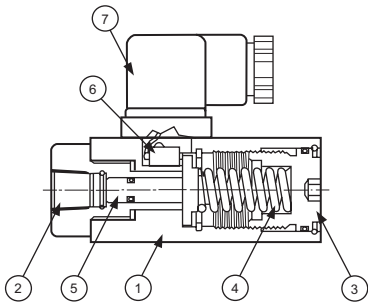


### Ordering Information

#### PS20 - 2K

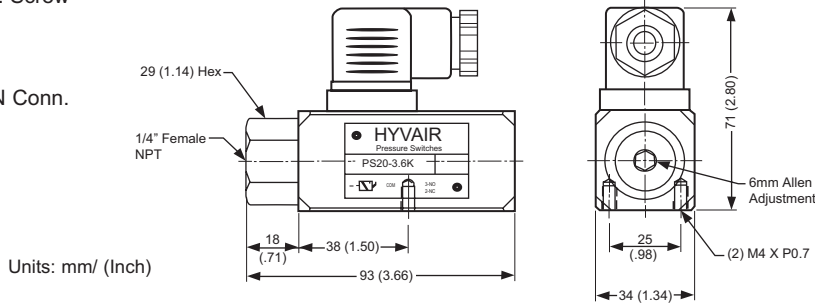


1. Body- (Iron)
2. Connection Port 1/4"
3. Pressure Adj. Screw
4. Spring
5. Piston
6. Micro Switch
7. Electrical DIN Conn.

Code	Pressure Range
.5K	90-500 psi
1K	90-1000 psi
2K	200-2000 psi
3.6K	500-3600 psi

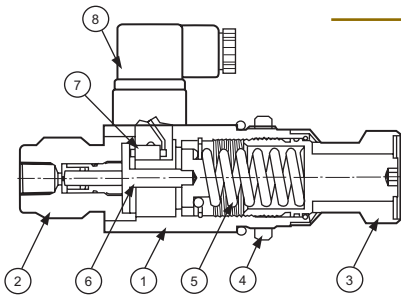


PS20 Pressure Switch



### Ordering Information

#### PS20 - 5K -K



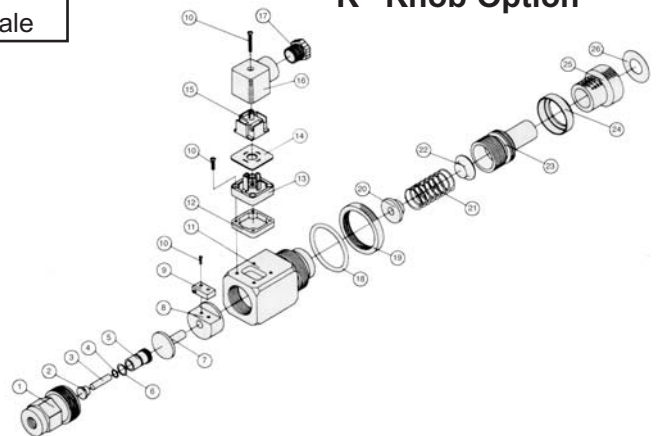
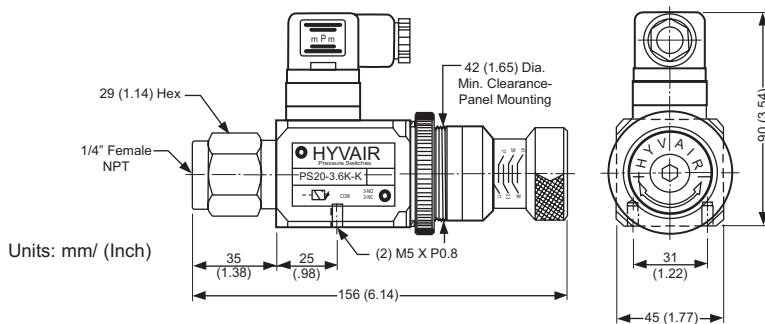
1. Body- (Iron)
2. Connection Port 1/4"
3. Pressure Adj. Knob
4. Panel Mount Nut
5. Spring
6. Piston
7. Micro Switch
8. Electrical DIN Conn.

Code	Pressure Range
.5K	90-500 psi
1.5K	200-1000 psi
3.6K	500-3600 psi
5K	700-5000 psi

Code	Option
K	Knurled Adjustment Knob with Pressure Read Out Scale



PS20 Pressure Switch "K" Knob Option



# INSTRUMENTATION/ ELECTRONICS



## PRESSURE SWITCHES



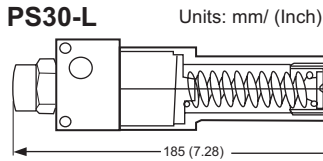
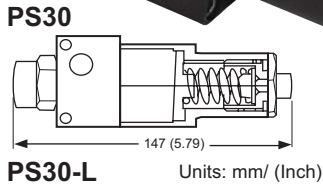
### PS30 Pressure Switch

#### Features

- Hydraulic Input - Pneumatic Output
- Stainless Wetted Parts
- Anodized Aluminum Body
- For Pilot Circuits Only
- CV = .15

#### Operating Pressure

- Air Pressure: 0 - 150 psi
- Hydraulic Pressure: 0 - 5000 psi



### Ordering Information

#### PS30 - L - 3K - omit - K

- Hydraulic Input
- Pneumatic Output
- 18 to 22% Dead Band

#### Optional L = Long

- 12 to 16% Dead Band

#### Range

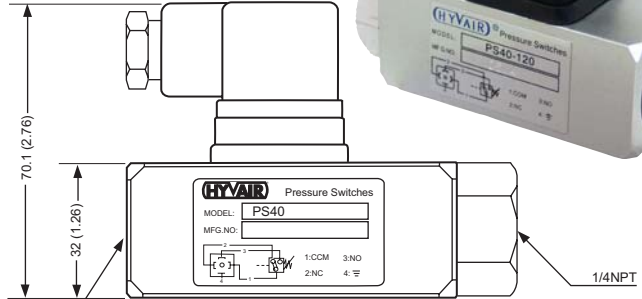
- 1K - 1000psi
- 2K - 2000psi
- 3K - 3000psi

#### Air Signal

- omit - 2 Pos • 3 way • Normally Closed
- NO - 2 Pos • 3 way • Normally Open

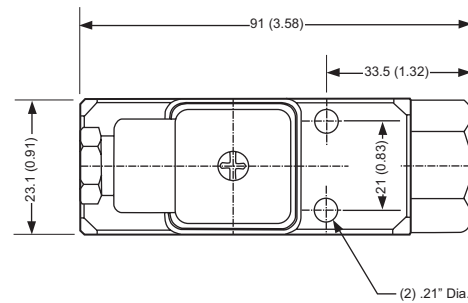
K = Knob Option

### PS40 Pressure Switch



6mm allen socket adjustment  
CW=increasing

Units: mm/ (Inch)



### Ordering Information

#### D03-PSA - 2K

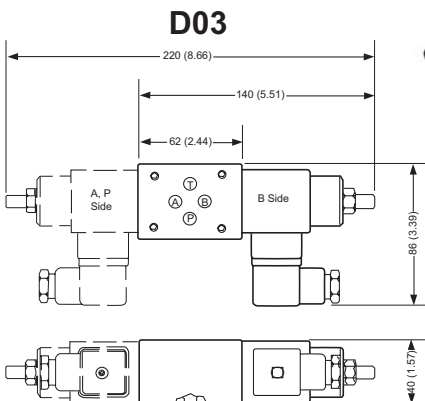
Code	Size
3	D03
5	D05

Code	Sensing Port
A	A Port
B	B Port
P	P Port
AB	Both A & B Port

Code	Pressure Range
.5K	90-500 psi
1K	90-1000 psi
2K	200-2000 psi
3.6K	500-3600 psi



### D03 Pressure Switch



D03-PSA  
D03-PSP

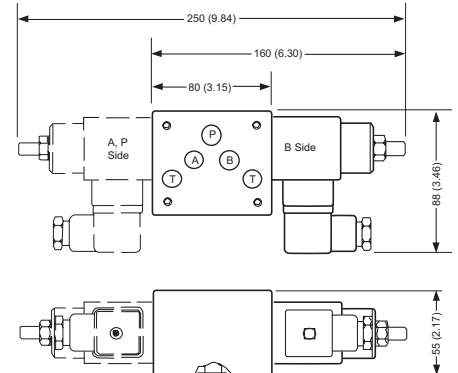
D03-PSB



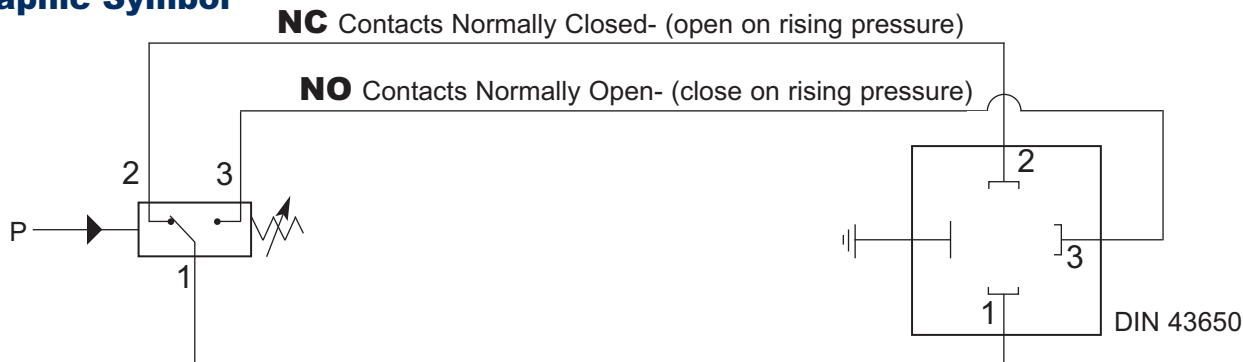
D03-PSAB

Units: mm/ (Inch)

### D05



### Graphic Symbol



### Specifications

Fluid:  
Hydraulic, lubricating and light oils

Construction:  
Piston actuated

Adjustment Range:  
90 - 5200 psi (6 - 350 bar)

Ambient Temperature:  
(130° to 175° F (-25° to 80° C))

Maximum Viscosity:  
450 SSU (1000 mm<sup>2</sup>/s)

Maximum Switching Rate:  
20 cycles/ min

Repeatability:  
± 3%

Electrical Connection:  
DIN 43650 Table A

Mounting:  
Arbitrary

Switching Element:  
Microswitch

Switch Ratings:

	Resistive	Inductive
14 VDC	3A	1.5A
30VDC	2A	1A
120VAC	3A	1A
240VAC	3A	0.5A

### Hysteresis Diagrams (PSI)

