

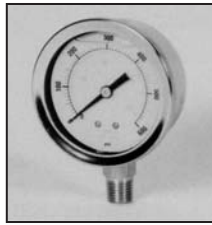
# INSTRUMENTATION/ ELECTRONICS



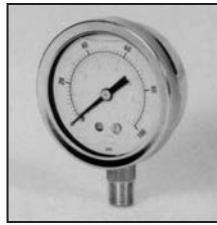
## PRESSURE GAUGES

General Hydraulic Service

Stainless Steel Case, Brass Internals, Glycerin-Filled, 1/8" 1/4" & 1/2" NPT Ports, Vacuum to 15,000 PSI



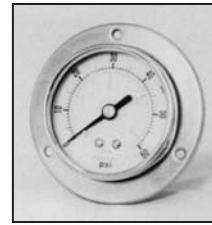
**BM- Bottom Ports**  
Crimped Case- Standard



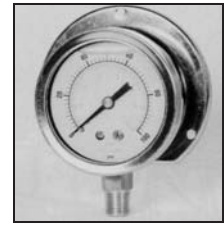
**TB- Twist on Bezel**  
(Optional)



**LB- Lower Back Ports**  
**U- Mounting Clamp**



**CB- Center Back Ports**  
**P- Panel Mounting**



**W- Wall Mounting**  
**TB- Twist on Bezel**

**Brass Pressure Snubber:**

1/4" Female NPT  
x 1/4" Male NPT

Model Number
602



**316SS Pressure Snubber:**

1/4" Female NPT  
x #4" Male SAE

Model Number:
D-SN1-4FP-4MS



**Steel Pressure Snubber:**

1/4" Female NPT  
x #6" Male SAE

Model Number:
S-SN1-4FP-6MS



**Gauge Isolator:**

Isolates and holds gauge's last pressure- no drain  
#6 SAE 1/4" NPT

Model Number	Model Number
G11-6FS	G11-4FP

Model 602: we recommend the "green striped" element (porosity 20) for most hydraulic applications.

### Ordering Information

**HYV- 2K - 2.5 - 4 - U - CB - O - Option Code/s** - (Omit if None)

Pressure Range- Zero to: (psig)				Gauge Size- Dia.	Port Size	Mounting	Port Location	Series
-30 Vac	160	800	6k	1.5	2- 1/8" MP	N- None	BM- Bottom	<b>O-</b> Hyd. Service; Glyc. Filled, 304SS Case, Brass Internals <b>U-</b> Air Service; Dry, Non-Filled, Steel Case, Brass Internals <b>M-</b> Mfg Code- must be in place to continue options <b>H-</b> same as series U but with black face & Hyvair logo
15	200	1k	10k	2	4- 1/4" MP	P- Panel	CB- Center/ Back	
30	300	1.5k	15k	2.5	8- 1/2" MP	U- U-Clamp	LB- Lower/ Back	
60	400	2k	20k	4	4F- 1/8" MP	W- Wall		
100	500	3k	25k	6	4MS- 4MS			
	600	4k	30k		4A- 9/16-18 Aminco			
		5k	35k		6A- 3/4-16 Aminco			
Available Dry or Filled				Available Filled Only	Example: 0-2000 psig, 2.5" Dia., 1/4" Male NPT, U- Clamp Mounting, Center Back Ports, OEM Series- Glycerin Filled			

Case	Internals	Fill Fluid	Options (Listed Alphabetically)	
B- Brass	B- Brass	D- Dry	A- Adapter Ring 4-1/2"	MP- Max Press. Pointer
C- 304SS	C- 304SS	F- Fillable	B- Bar/ Psi	P- Plastic Lens
D- 316SS	D- 316SS	G- Glycerin	C- Calibrated	R- Red Stationary Pointers
P- Polyamid	M- Monel	S- Silicon	G- Glass Lens	RS- Restrictor Screw
S- Steel	S- Steel		K- kPa/ Psi	SB- Solid Front/ Blow-Out Back
			K2- kg/sq-cm	T- High Temp Service
			MD- Mirror Dial w/ Knife Edge Pointer	Z- Special/ Write Out
			MM- Min/ Max Pointers	

