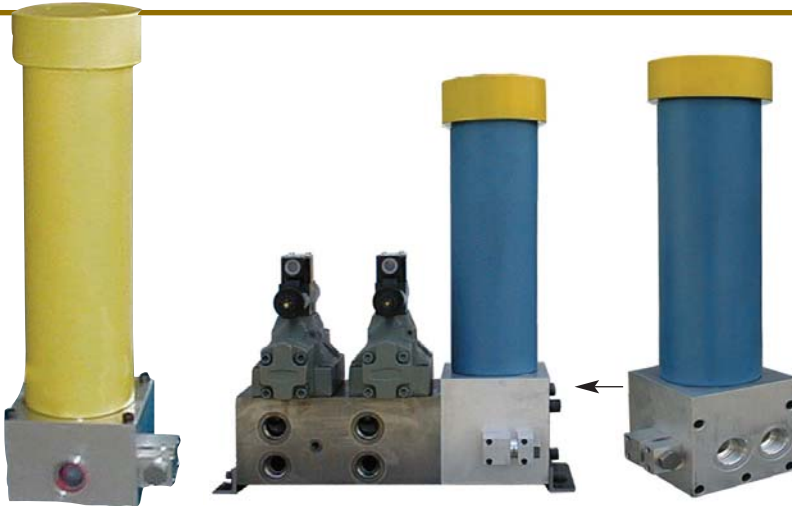


FILTRATION

PRESSURE FILTERS WITH BYPASS



#16 SAE thru #24 SAE



**PFB100" T" Style
In-Line Filter**

**PFB105 Modular Filter
D08 Mounting**

Features

- High Flow, Bypass Elements:** Element designed for high flows and low pressure drops.
- Replaceable Elements:** Element may easily be replaced by unscrewing end cap. Only the element must be disposed.
- High Quality Glass Fiber Filter Media:** Coreless element supported by support fleece.
- Three Element Lengths:** 9", 18" & 27" lengths available. Elements will interchange with popular manufactured elements.

Specifications

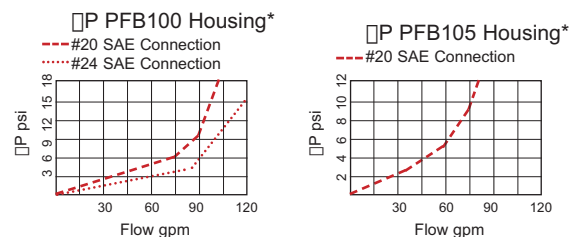
Maximum Pressures	Head & Housing	3,000 psi (210 bar) Maximum Working Pressure
	Element	Series B1=150 psi Differential Collapse w/ 50 psi Reusable Bypass Valve Series B2= 290 psi Differential Collapse w/ 50 psi Reusable Bypass Valve
Temperature	-15° F to +230° F (Viscosities Permitting)	
Recommended Fluids	Petroleum Based Fluids- ISO VG32-68, Phosphate Ester, Most Vegetable Oils, Water Based Fluids to 40% Water	
Materials	Filter Heads, Filter Body	Aluminum, Steel
	Filter Element	Glass Fiber ($\mu_x \geq 200$) with Mesh Support (steel end caps)

Element Flow Ratings

Bowl Length	Filter Rating (microns) $\mu_x \geq 200$	Model Number (Element Only)	Element Flow*	
			($\Delta P= 5$ psi)	($\Delta P= 10$ psi)
1	3 μ Absolute	9-3	41	82
	12 μ Absolute	9-10	62	124
	25 μ Absolute	9-25	100	200
2	3 μ Absolute	18.6-3	82	164
	12 μ Absolute	18.6-10	124	248
	25 μ Absolute	18.6-25	166	332
3	3 μ Absolute	28-3	125	250
	12 μ Absolute	28-10	250	500
	25 μ Absolute	28-25	250	500

*Element GPM with viscosity of 150 SUS, Specific Gravity of .88 (ISO 32 Oil at 100° F).
Total pressure drop= ΔP Housing + ΔP Element
Shaded areas are beyond housing rating of PFB100 (125 gpm max.)

Filter Housing Pressure Drops



Maximum Flows:
PFB100: 125 GPM PFB105: 90 GPM



FILTRATION

PRESSURE FILTERS WITH BYPASS

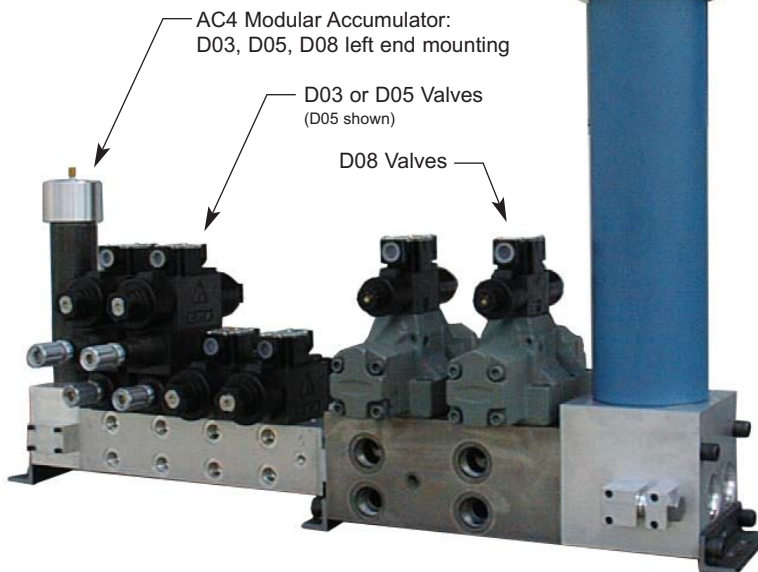


#16 SAE thru #24 SAE



PFB100 "T" Style
Pressure Filter

Differential Indicator,
Relief Valve, Optional



PFB105 Modular Pressure Filter
Attaches to Hyvair D08 Manifolds

Size 20 Female SAE Ports Only
Differential Indicator,
Relief Valve, Outlet Check Valve Optional

Ordering Information

FILTER ASSEMBLY

PFB100 - 20FS - 18.6 - 3 - D1

PFB100 "T" Style
PFB105 Modular

Code	Size
16FS	#16 Female SAE
20FS	#20 Female SAE
24FS	#24 Female SAE

Code	Element Length / Max. Flow Rating
9.0	9.0 (40 gpm)
18.6	18.6" (80 gpm)
28.0	28.0" (120 gpm)

Code	Filtration
3	3 Micron
10*	10 Micron
25	25 Micron

*Code 10
Micron Rating
12□ □_k ≥ 200
10□ □_k ≥ 75

Code	Optional Codes - List Alphabetically
C	Outlet Check Valve (7 psi cracking)
D1	50 psi Differential Pressure Indicator
DE1	50 psi Diff. Pressure & Electrical Indicator
R	Relief Valve 300-3000 psi, 50 gpm max.

ELEMENT ONLY

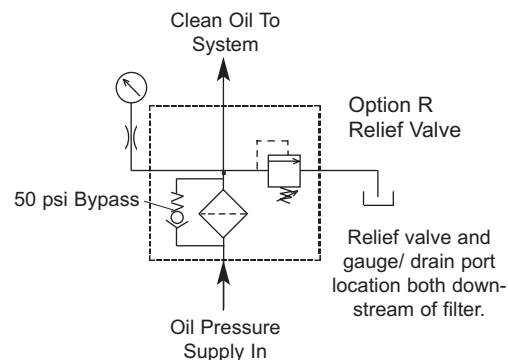
B1-S1-26-3.9 - 18.6 - 3

Bypass Series 1, Steel End Caps
Buna N seals, Nominal Size 26
(1.625" ID on filter head end,
1.89" ID on bypass check end),
3.9" Outer Diameter

Code	Element Length/ Max. Flow
9	3.44" (40 gpm)
18.6	6.05" (80 gpm)
28	10.3" (120 gpm)

Code	Filtration
3	3 Micron
10*	12 Micron
25	25 Micron

*Code 10
Micron Rating
12□ □_k ≥ 200
10□ □_k ≥ 75

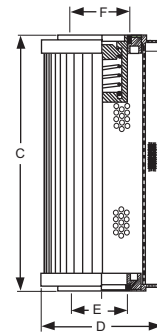


Dimensional Data

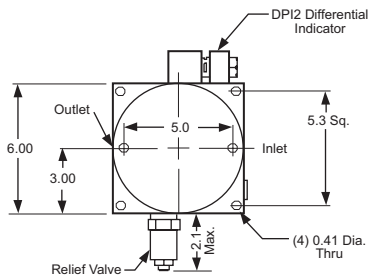
B1 Pressure Filter Elements (FOR PF100 AND PF105)

Element NB1S1263.9-	C	D	E	F (bypass)
9-*	9.0	3.8	1.625	1.89
18.6-*	18.6	3.8	1.625	1.89
28-*	28.0	3.8	1.625	1.89

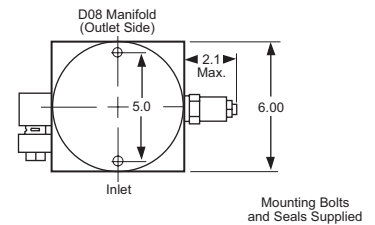
Units: Inches



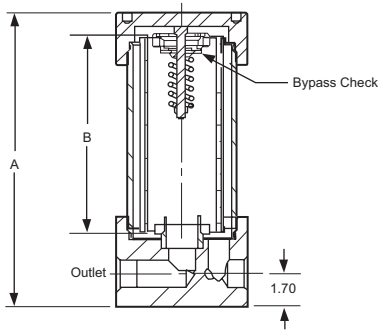
PFB100 Pressure Filter



PFB105 Pressure Filter

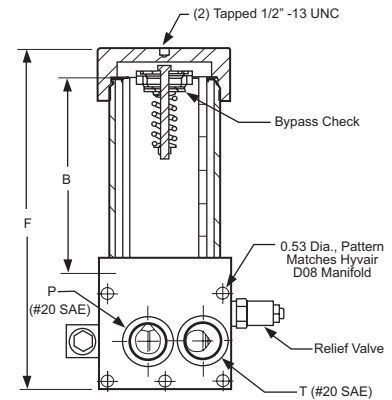


Mounting Bolts and Seals Supplied

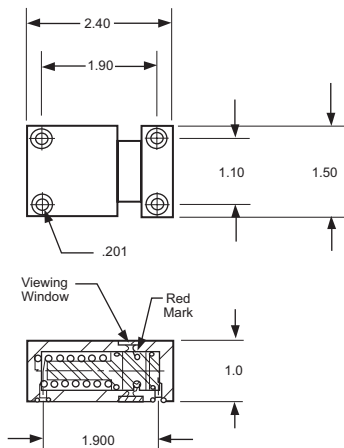


Element Length	A	B (Tube Length)	F
9.0	13.9	4.28	15.8
18.6	23.6	6.90	25.5
28.0	32.9	11.17	34.8

Units: Inches



DPI2 Differential Pressure Indicator



DE1 and DE2 Differential Electric Indicators:
Available soon.

Differential Indicators:	System Pressure 1000 psi	
	start	dirty
Option Code: D1 (50 psi) Full Model: DPI2-3K-11-A1	□P= 33	49
Option Code: D2 (150 psi) Full Model: DPI2-3K-31-A1	□P= 80	144