

# VANE PUMPS

## PCV3/ 5 SERIES- SAE A VANE PUMPS



Series PCV3/ PCV5 Vane Pumps

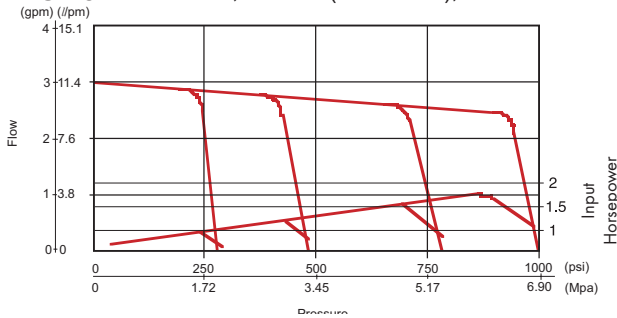
SAE A, 2-Bolt

### Features

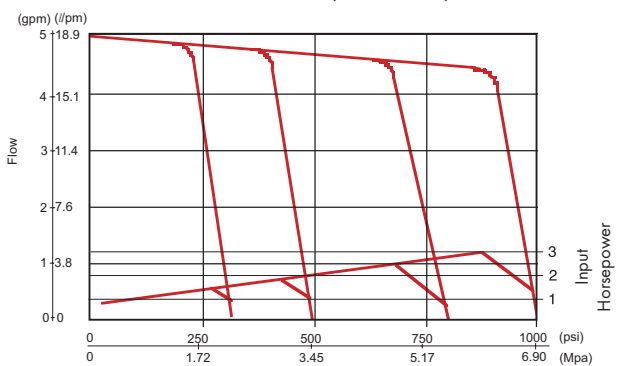
- Variable Volume, Pressure Compensated Design:** Reduces heat, noise and horsepower requirements. Pump maintains constant pressure while matching system flow demands.
- Simplified Circuit Design:** Direct spring operated compensator, no safety relief valve required.
- Quiet Operation:** Noise levels as low as 67 dBA.
- Compact and Simple Design:** Dependable operation- compensator not prone to contamination.
- Long Service Life:** Sturdy construction, precise machining ensures durability.
- Volume Adjustment Standard:** Pumps can be reduced as much as 50% of total maximum displacement.

### Specifications

**PCV3** 1750 RPM, 3 GPM (at no load), 1000 PSI Max

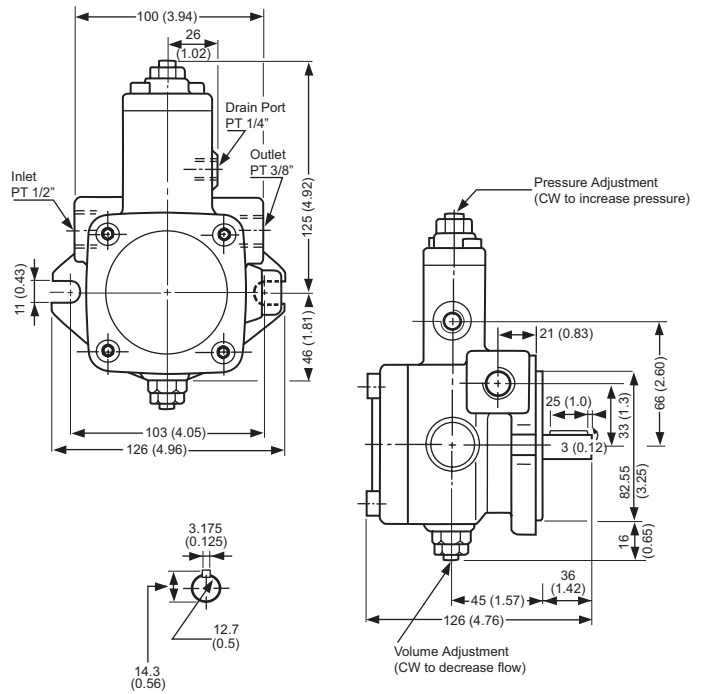


**PCV5** 1750 RPM, 5 GPM (at no load), 1000 PSI Max



Typical performance curves based on ISO VG46 Oil @ 120°F, (49°C)

### Dimensional Data



Units: mm/ (Inch)

Weight: PCV3: 9.9 lbs/ 4.5 kgs PCV5: 10.6 lbs/ 4.8 kgs

### Ordering Information

**PCV3 - 1K - 2AK - 1**

Note: Available right hand rotation (only)- viewed facing pump shaft

Size (GPM)
3
5

Code	Press Range
300	150-300 PSI
600	200-600 PSI
800	400-800 PSI
1K	400-1000 PSI

Mounting Style
2-Bolt, SAE A, 1/2" Dia. Keyed Shaft x 1.42" Long w/ 1/8" Key, Flow Adj. Std.

Series 1 Porting
1/2" inlet, 3/8" outlet, 1/4" case all female NPT

