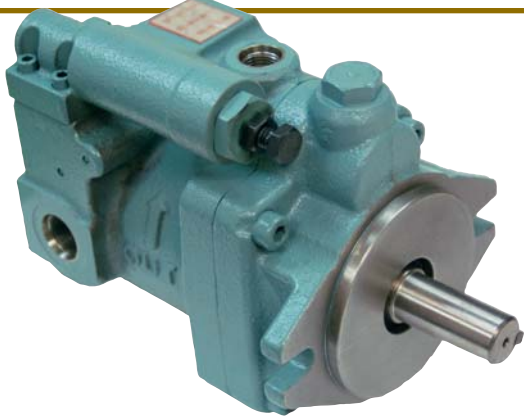


# PISTON PUMPS

SERIES PCP4



SAE A, 2-Bolt



Series PCP4 Piston Pumps

## Specifications

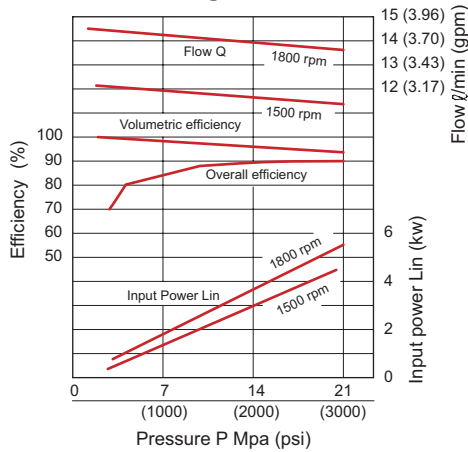
**PCP4 1800 RPM, 3.8 GPM (at no load), 3000 PSI Max**

Model	Pressure Range (psi)	Displacement per rev.	Flow @ 1800 RPM	Weight
PCP4-5K-2AK-3	143-500	0.49 cu-in	3.8 gpm (14.4 lpm)	17.0 lbs
PCP4-1K-2AK-3	286-1000			
PCP4-2K-2AK-3	500-2000	8.0 cc		7.7 kgs
PCP4-3K-2AK-3	500-3000			

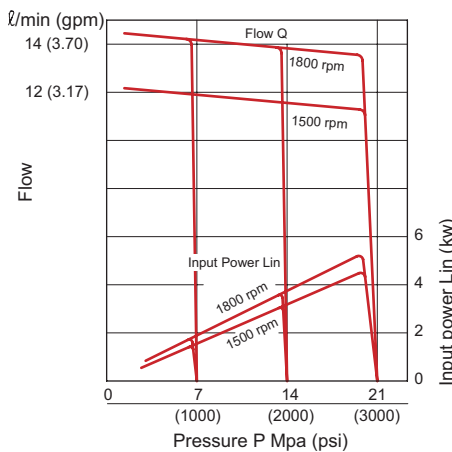
## Performance Data

Typical performance curves based on ISO VG32 Oil @120°F, (49°C)

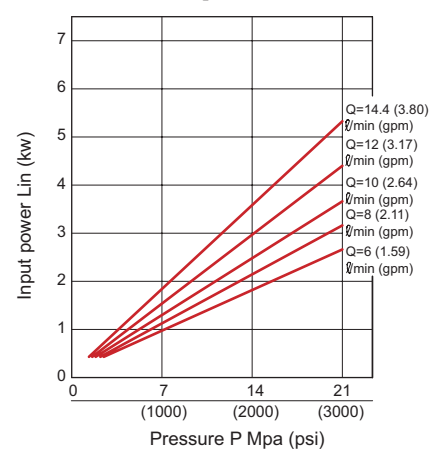
### Efficiency Curves



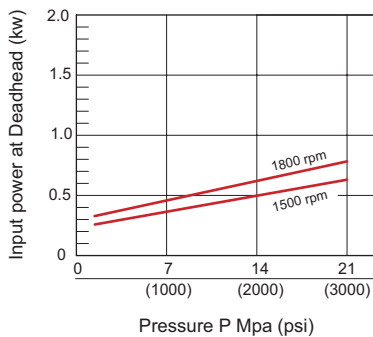
### Pressure vs Flow



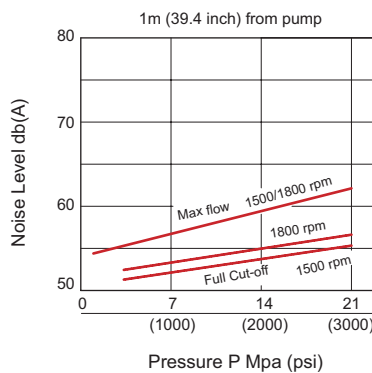
### Power Input



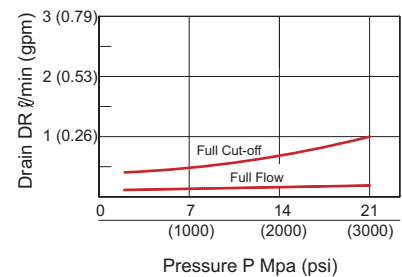
### Deadhead Power



### Noise Level



### Drain Curve



# PISTON PUMPS

SERIES PCP4

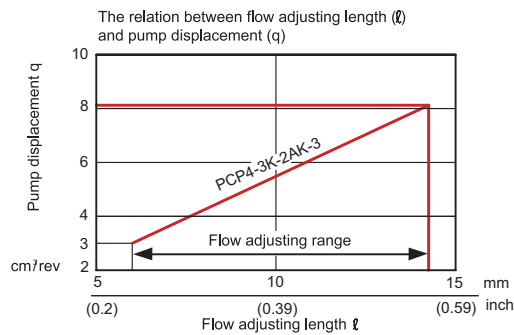
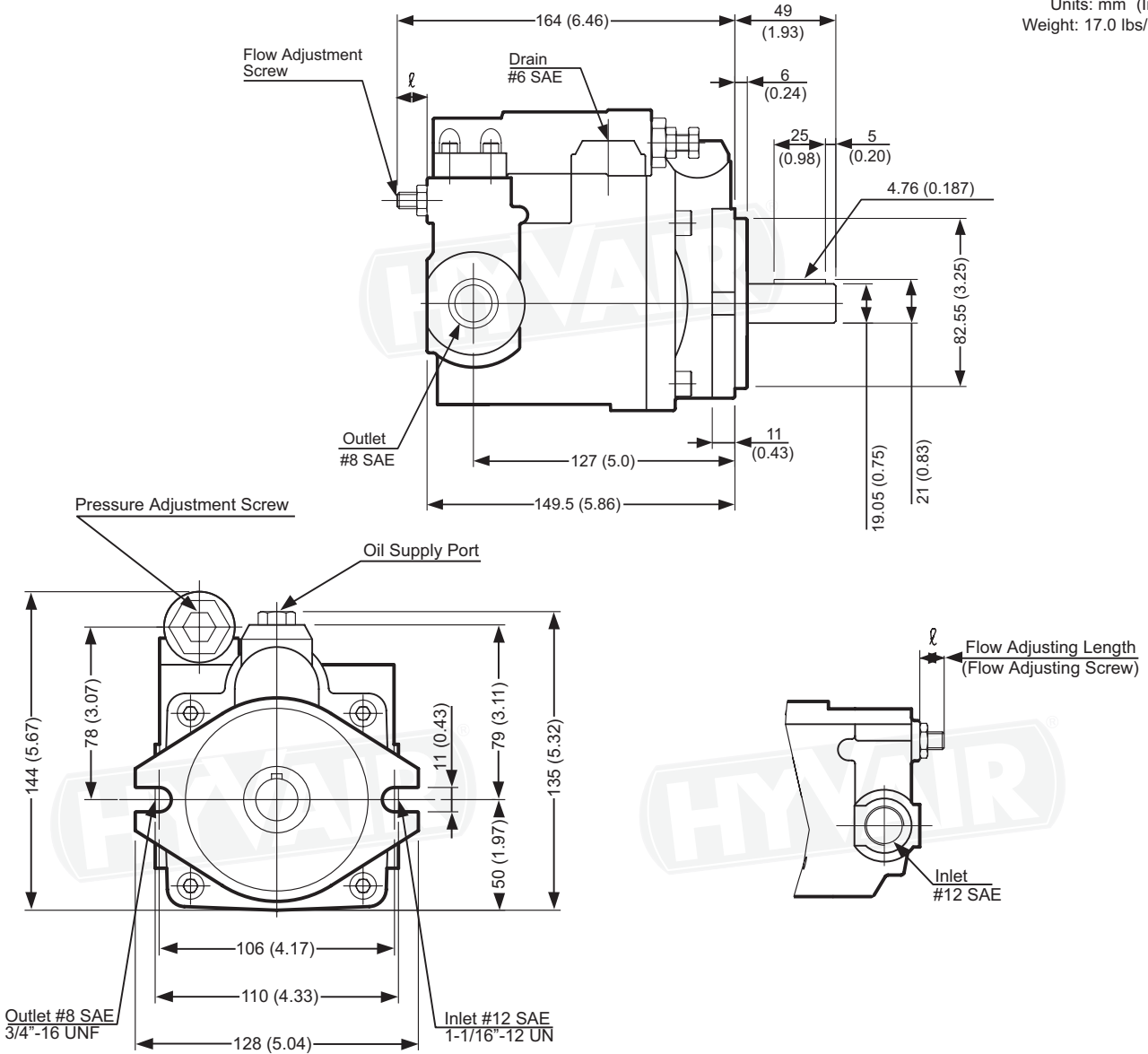


SAE A, 2-Bolt

## Dimensional Data

**PCP4-3K-2AK-3**

Units: mm (Inch)  
Weight: 17.0 lbs/ 7.7 kgs



# PISTON PUMPS

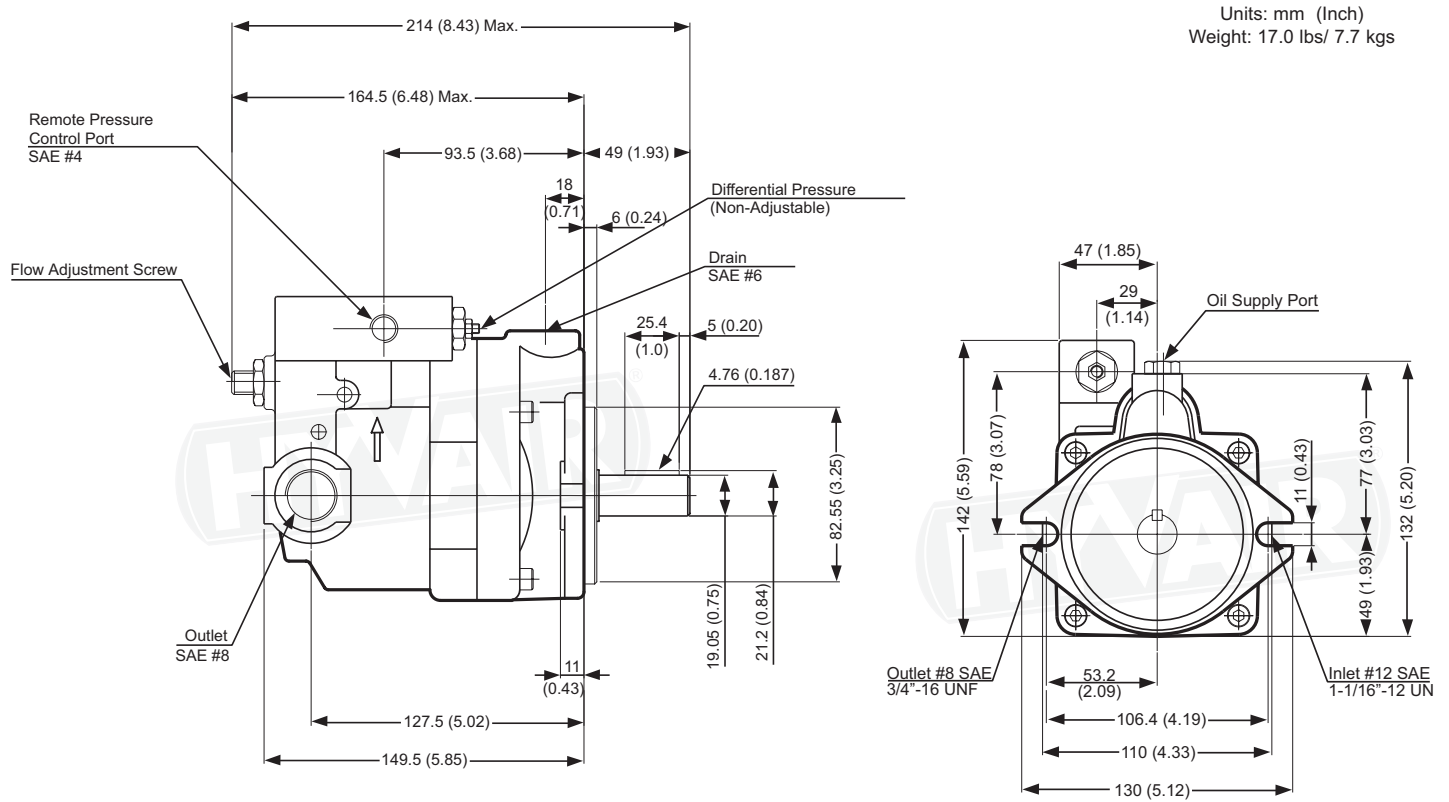
SERIES PCP4



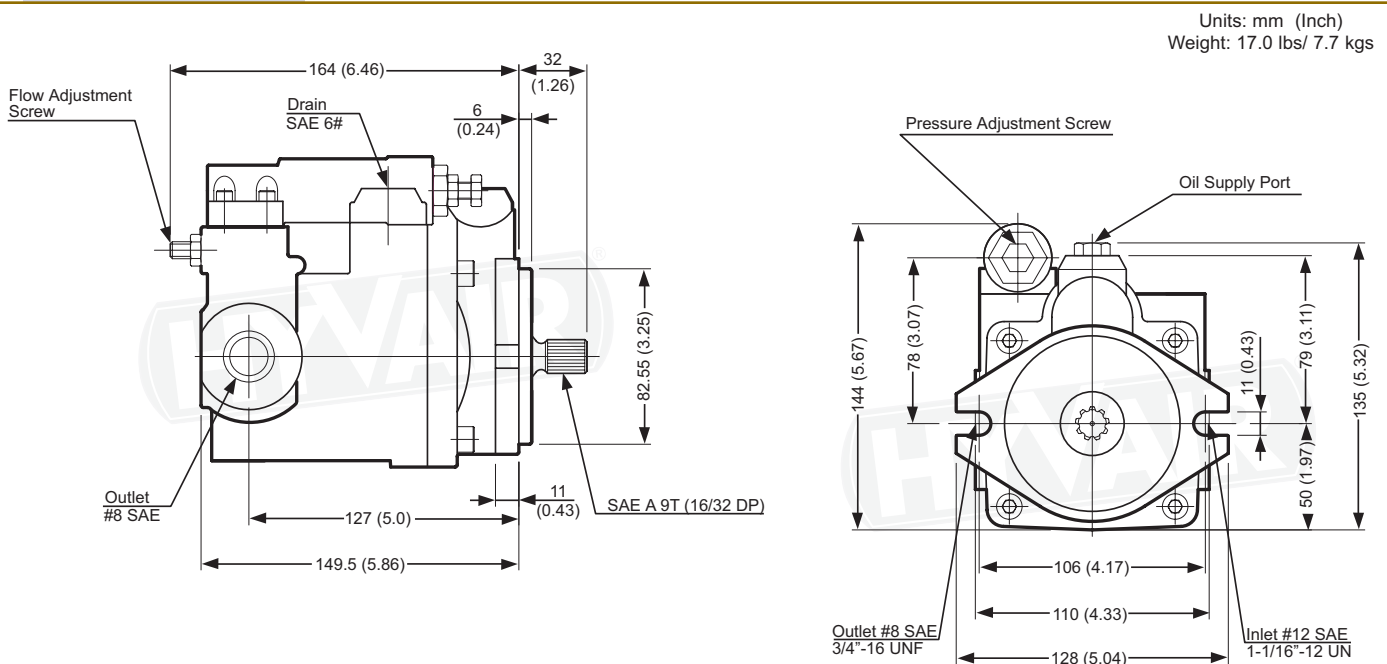
SAE A, 2-Bolt

## Dimensional Data

### PCP4-3K-2AK-3-RC



### PCP4-3K-2AS-3



# PISTON PUMPS

SERIES PCP4

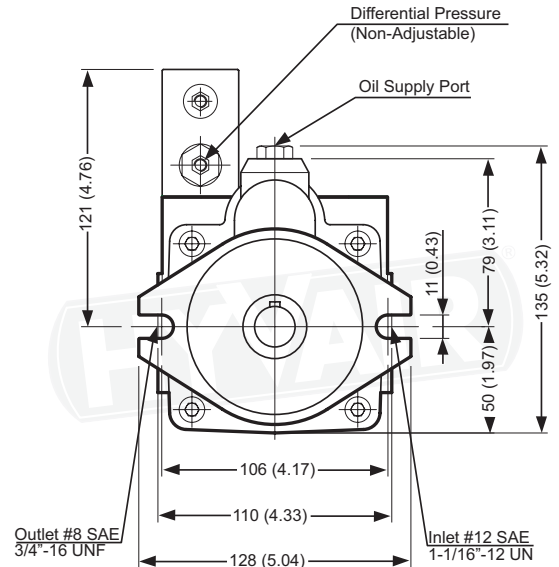
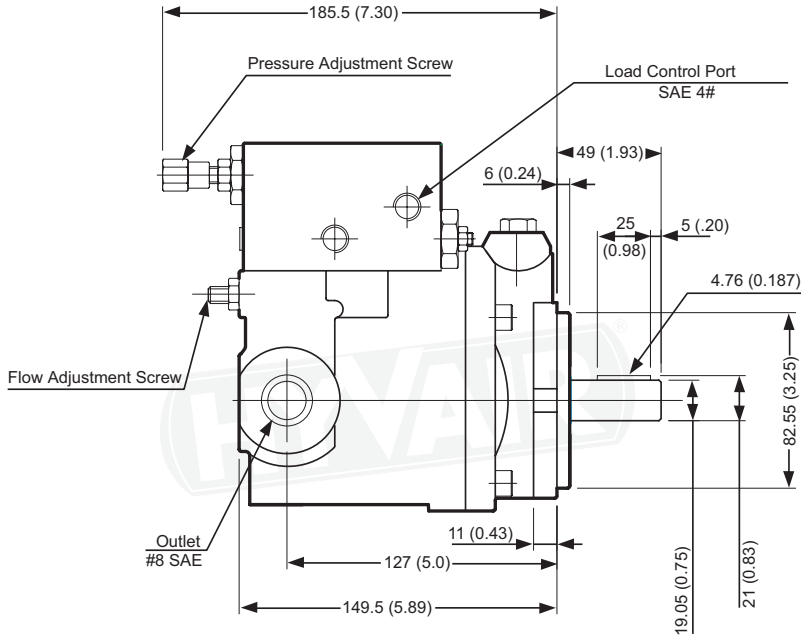


SAE A, 2-Bolt

## Dimensional Data

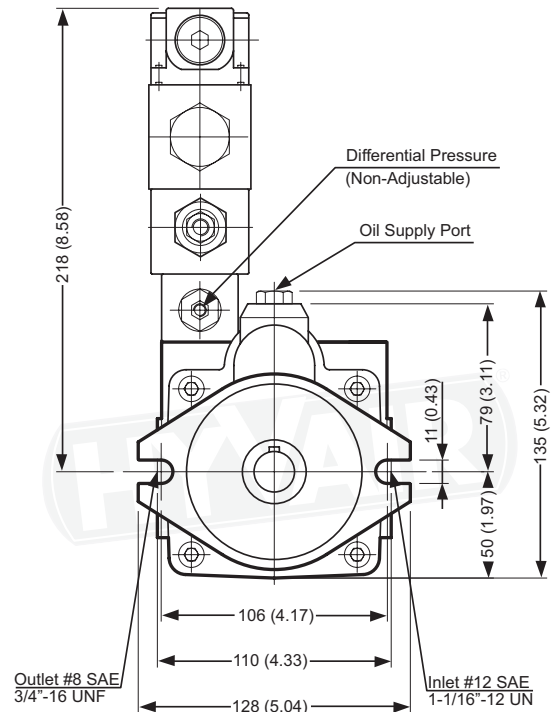
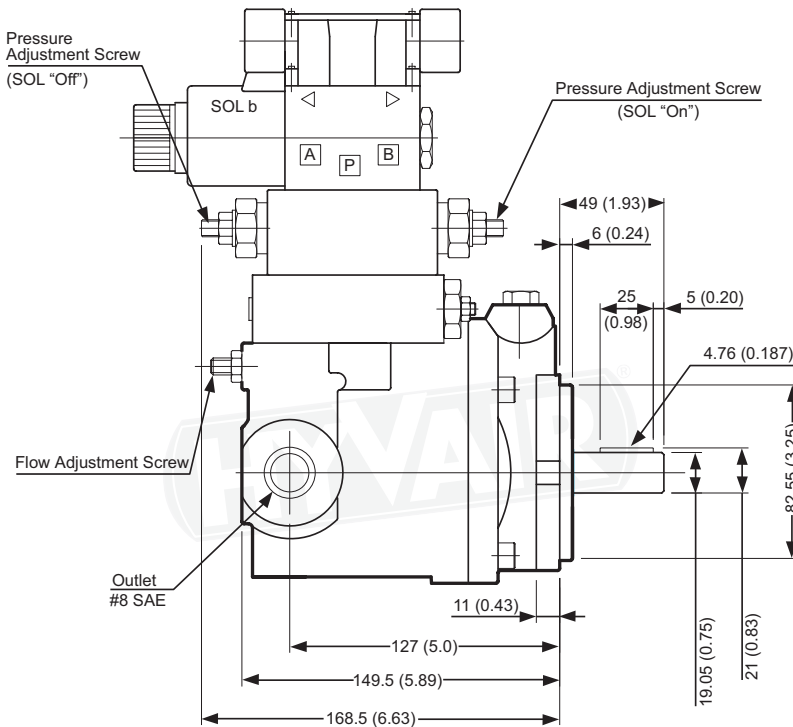
### PCP4-3K-2AK-3-LS

Units: mm (Inch)  
Weight: 18.1 lbs/ 8.2 kgs



### PCP4-3K-2AK-3-2PSO

Units: mm (Inch)  
Weight: 25.1 lbs/ 11.4 kgs



# PISTON PUMPS

SERIES PCP4

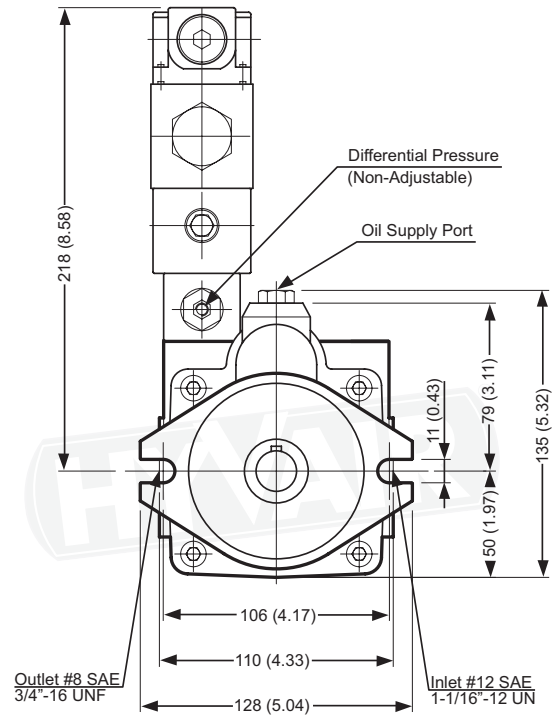
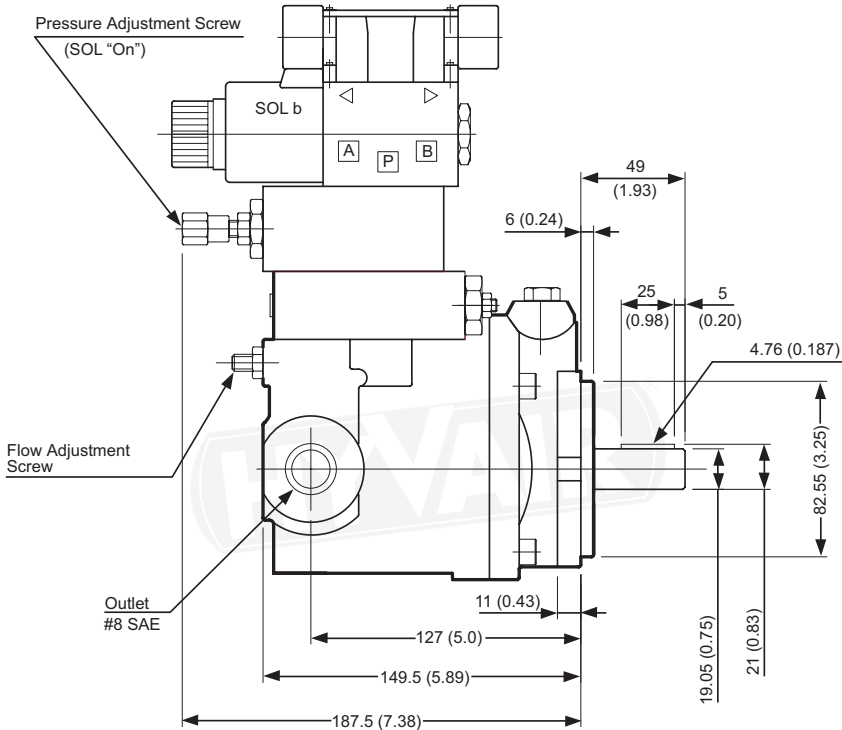


SAE A, 2-Bolt

## Dimensional Data

### PCP4-3K-2AK-3-SO

Units: mm (Inch)  
Weight: 21.8 lbs/ 9.9 kgs



## Ordering Information

### PCP4 - 3K - 2AK - 3 - SO

Note: Available right hand rotation (only)- viewed facing pump shaft

Size (GPM)	Code	Pressure Range	Code	Mounting Style	Series 3 Porting	Code	Control Type
4	.5K	143-500 PSI	2AK	2-Bolt SAE A, 3/4" Dia. Keyed Shaft x 1.67" Long w/ 3/16" Key, w/ Flow Adj.	All Female SAE: #12 Inlet, #8 outlet, #6 case drain	omit	Standard
	1K	286-1000 PSI				RC	Remote Compensator
	2K	500-2000 PSI				LS	Load Sensing
	3K	500-3000 PSI				2PSO	Dual Pressure Solenoid
			2AS	2-Bolt SAE A, 9 Tooth Spline, 16/32 DP		SO	Single Pressure Solenoid

