

# GEAR PUMPS

## G SERIES- SAE B GEAR PUMPS



SAE B, 2-Bolt

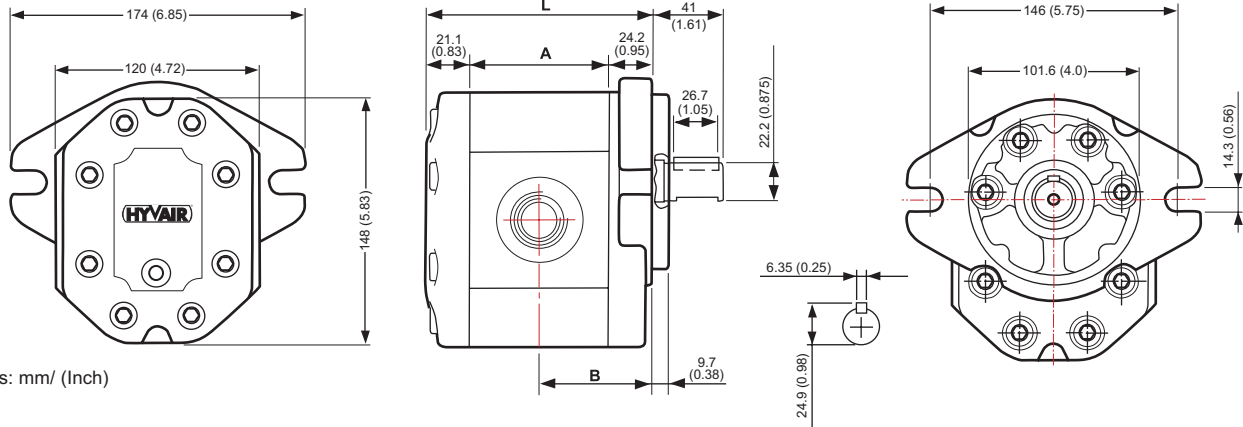


### Specifications

1. High volumetric efficiency
2. Extruded aluminum alloy body
3. Die cast aluminum cover and mounting flange
4. Balanced pressure loading
5. Inlet pressure rating -5" mercury (vacuum) to 14 psi
6. Recommended for petroleum based fluids- ISO VG32-68
7. Recommended filtration- 10 micron
8. Cold starts: 250 SUS maximum viscosity
9. **Maximum Temperature:** 180°F, (82.2°C) or minimum fluid viscosity of 80 SUS

G Series SAE B Gear Pumps

### Dimensional Data



Model	Displacement		Pressure <sup>psi</sup> ( <sup>mpa</sup> )		RPM Range	Dimensions <sup>mm</sup> ( <sup>inch</sup> )			Weight		Port											
	cc./r.	cu.in/r.	Continuous	Max.		A	B	L	lbs	kg	SAE	UNF										
G12-2BK-3	26	1.59	3300 (23)	3915 (27)	3300  2000	21.1 (0.83)	24.2 (0.95)	41 (1.61)	26.7 (1.05)	22.2 (0.875)	146 (5.75)	101.6 (4.0)	14.3 (0.56)	In #16	In 1 <sup>1</sup> / <sub>16</sub> - 12							
G16-2BK-3	33	2.01	3300 (23)	3915 (27)										67 (2.638)	134.5 (5.295)	Out #12	Out 1 <sup>1</sup> / <sub>16</sub> - 12					
G18-2BK-3	39	2.38	3190 (22)	3770 (26)										69.5 (2.736)	139.5 (5.492)	In #20	In 1 <sup>5</sup> / <sub>8</sub> - 12					
G20-2BK-3	44	2.69	3000 (21)	3625 (25)		71.5 (2.815)	143.5 (5.650)	Out #16	Out 1 <sup>5</sup> / <sub>16</sub> - 12													
G24-2BK-3	52	3.17	2900 (20)	3335 (23)		73 (2.874)	146.5 (5.768)	6.35 (0.25)	24.9 (0.98)	9.7 (0.38)	174 (6.85)	120 (4.72)	148 (5.83)	HYVAIR	L	A	B	L	In	Out		
G29-2BK-3	61	3.72	2755 (19)	3190 (22)		76 (2.992)	152.5 (6.004)														In #24	In 1 <sup>7</sup> / <sub>8</sub> - 12
G33-2BK-3	71	4.33	2465 (17)	2900 (20)		79 (3.110)	158.5 (6.240)															
G37-2BK-3	78	4.76	2320 (16)	2755 (19)		82.5 (3.248)	165.5 (6.516)	Out #16	Out 1 <sup>5</sup> / <sub>16</sub> - 12													
G41-2BK-3	87	5.31	2030 (14)	2465 (17)		85 (3.347)	170.5 (6.713)															
					88 (3.465)	176.5 (6.949)																

